



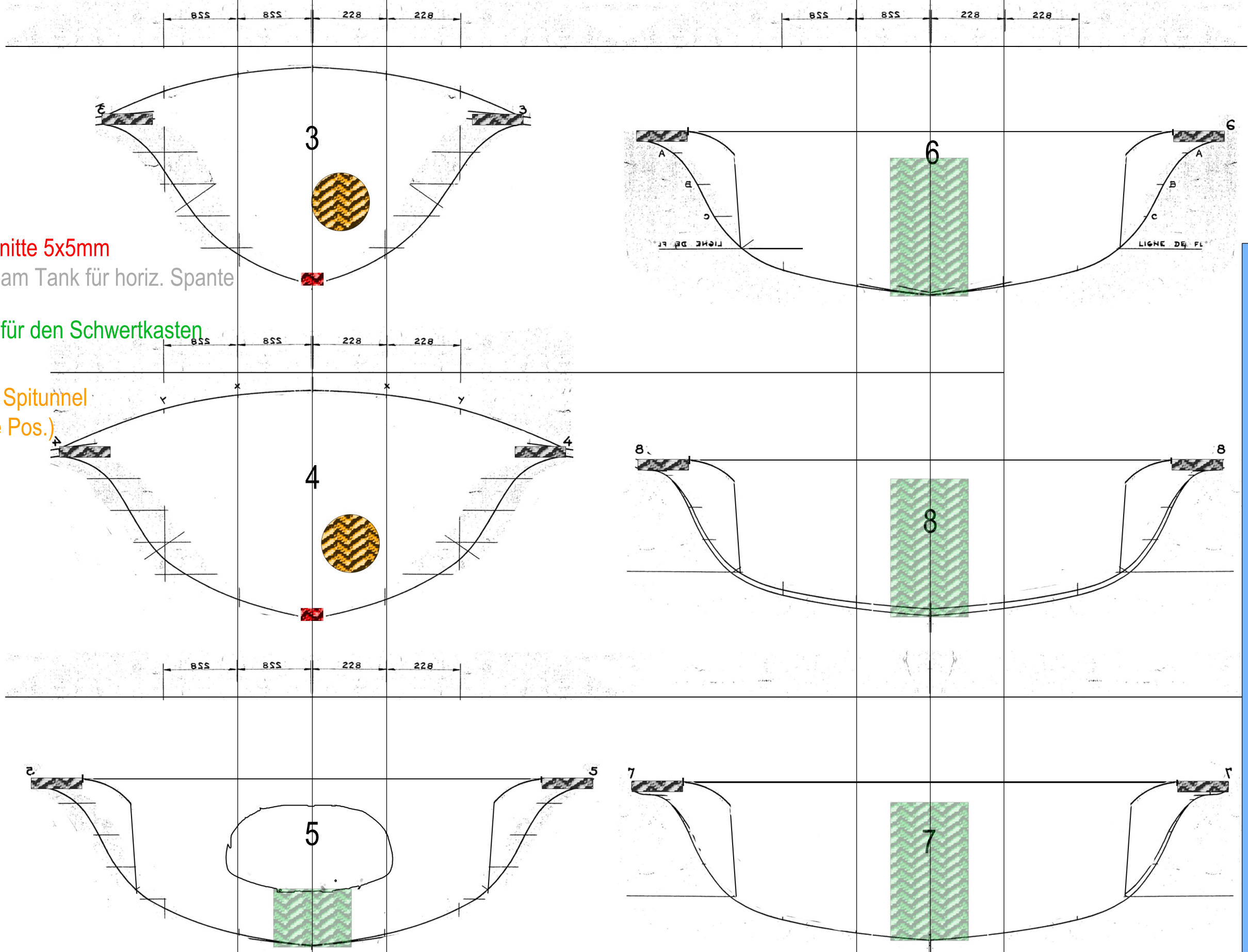


-  Kielausschnitte 5x5mm
-  Ausschnitte am Tank für horiz. Spante 10x2mm
-  Ausschnitt für den Schwertkasten 20x40mm
-  Ausschnitt Spittunnel (ungefähre Pos.)



2x Aussägen

Schwertkasten aus 4mm dicken Holz

150x28 mm